


# Hosting & Application for your business



METAWAYS >





+53° 32' 39" N  
+9° 59' 41" 0

# Come on in, we'll show you around.

The year 2001 offers a series of important milestones in science and technology. The human genome is completely sequenced, the German Wikipedia is founded and Metaways Infosystems GmbH begins operations. Quite a bold move one year after the year after the dotcom bubble burst, but our managing directors, brothers Hermann and Lüder Thaele, were sure that reliable hosting and real expertise would be in demand more than ever.

Today, Metaways offers its customers much more than just the infrastructure and the range of services required for proper hosting operations: the comprehensive and individual support of sophisticated e-commerce projects also includes our software development team, which works hand in hand with system administration to develop and implement solutions for our customers.

Our location in the heart of Hamburg's Speicherstadt corresponds to our mentality: Hanseatic, cosmopolitan and a mixture of tradition and constant change. This is also apparent in our employees. In addition to professional qualifications, interpersonal relations also play a major role for us. This „feel-good factor“ ensures low staff turnover. At the same time, in IT it is not enough to stew in one's own juice, and so we emphasise further training and the exchange of knowledge between employees and specialist departments.

**Moin!**  
**Hanseatic: Down-to-earth, fair  
cooperation, a sense of tradition, but always  
with a keen eye on new developments.  
That's what Metaways stands for.**

Hermann Thaele, Geschäftsführer





# Premium Hosting

With a hosting at Metaways you decide for a partner who competently accompanies and supports you and your technical service providers in all phases of your web project. Mass business is not ours, with us it is personal. We understand the importance of your project and rely on modern and highly available infrastructures and architectures with a comprehensive range of custom-fit services and solutions to contribute to your success. To this end, you will have dedicated contact persons who know your platform and its needs inside out: An experienced consultant/project manager in the phases of planning and technical realization, a system administrator in platform support, a service manager for change/service management, SLA reporting, elasticity planning and much more.

We take it personally!

## Our infrastructure



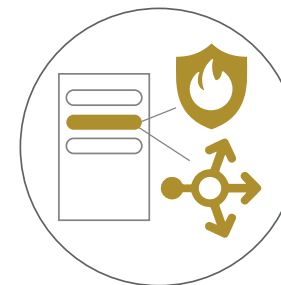
### Virtual Server

Virtual servers in our virtualization clusters offer you maximum flexibility – in CPUs, RAM, hard disk space and operating software. Server redundancies are operated on different cluster nodes. The stack of our platforms is fully managed via our automated system and configuration management.



### Container & Pods

Our virtualization clusters support the operation of applications virtualized in Docker containers. For projects in Kubernetes, we provide our customers with their own Kubernetes cluster with its own control planes, worker nodes and container registry. Database, search and caches can be provided as highly available and fully managed services.



### Dedicated Infrastructure

From dedicated hardware servers, firewalls, load balancers, switches to storage and backup systems. We provide you with your very own infrastructure as a managed rental solution and guarantee proper operation. We are also ready to support you with possible validations such as GxP and accompany you in auditing.



### Amazon Web Services

Whether as a holistic cloud platform with professional management and round-the-clock support or as partial cloud services to complement and extend Metaways' own hosting infrastructure and operating concepts. We accompany you in the implementation and further development of your global hosting strategies.



# Systems in focus

Each system, whether out-of-the-box or framework, brings its own technical requirements, possibilities and best practices. The API-first approach has long since replaced cumbersome monoliths in the software design of modern and agile e-commerce systems. Secure Security, performance and scalability play an important role in forward-looking omnichannel projects and require high standards of hosting in order to stay ahead of the ever-increasing processing loads.

With the right hosting partner at your side, you can tap into the potential and advantages of the versatility you have gained and set the technical course for a more successful online business.



## Shopware Hosting

Metaways is Shopware's enterprise hosting partner. Contrary to the standard hosting packages prevalent on the market, our hosting setups are fully oriented towards your requirements and those of your agency. In combination with our services and best practices, a sure bet for your satisfaction.



## Spryker Hosting

Metaways is an official Spryker hosting partner. With Spryker Commerce OS, new customer interfaces in the form of front-end applications such as desktop store, mobile apps, IoT scenarios, blockchain technology or bot and voice integrations can be implemented within a very short time.



## Pimcore Hosting

Pimcore, the modern digital platform for centralized data management and personalized customer experience, offers developers numerous possibilities, which are even better accentuated by a coherent hosting. Find out what benefits Pimcore hosting at Metaways offers.



## E-Commerce Hosting

When it comes to hosting your e-commerce platform, don't trust just anyone – it's better to rely on experience and expert knowledge. Metaways not only understands your requirements for security, scalability and high availability, we also know how to translate them into a customized environment.



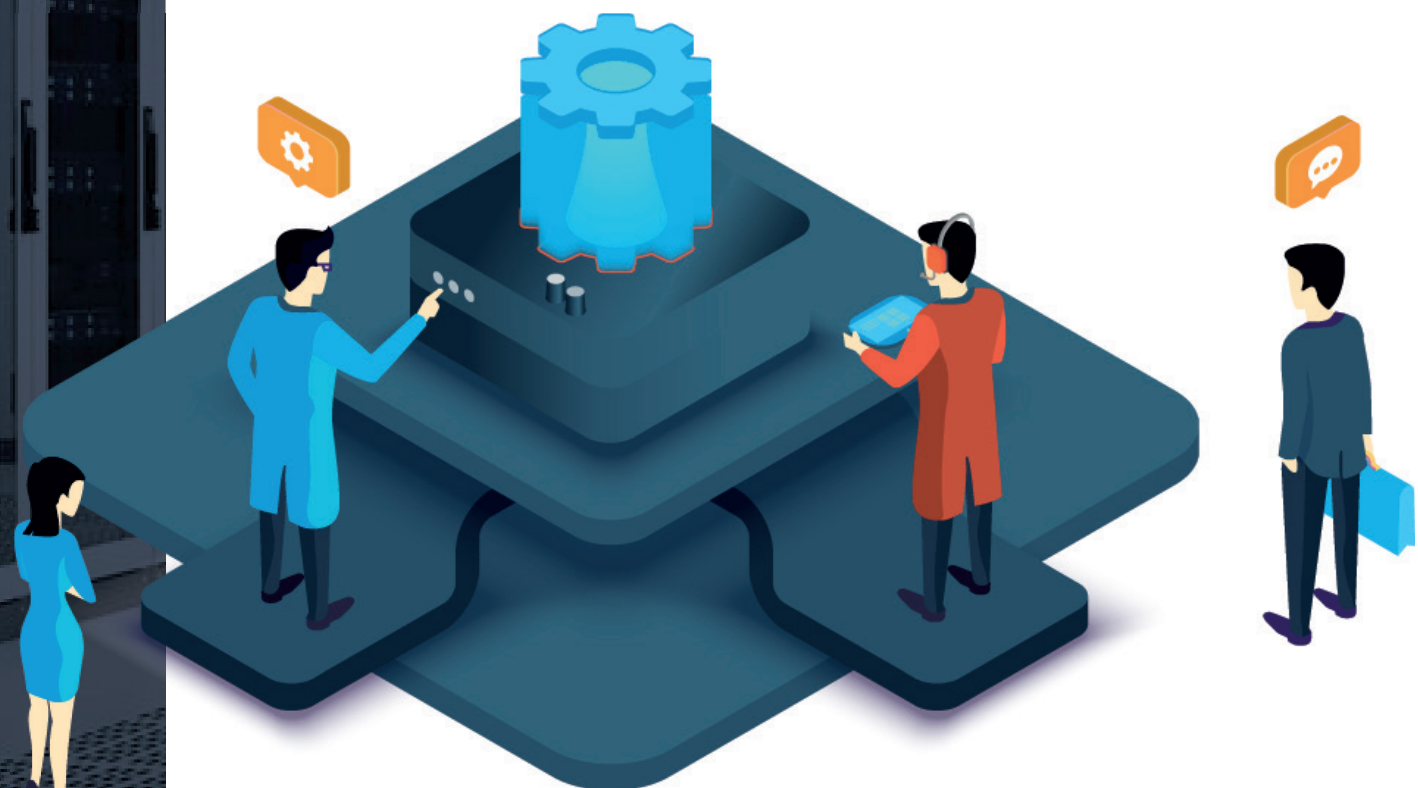
# Our data centres

Regardless of the solution you choose, you can rest assured that the hardware itself is in the best hands. We rely on two mutually independent data centres at our Hamburg location.

We operate colocations there with their own autonomous system. Both locations are ISO 27001 certified.

# Double for less trouble

Our colocations are located in the Hamburg data centres of Lumen Technologies (formerly CenturyLink) and PlusServer GmbH. Because of the respective independence of our data centre partners, we create more security for your business operations and meet the demands of spatial distance of more than eight kilometres. To ensure the ideal conditions for the demands of geo-redundancy.

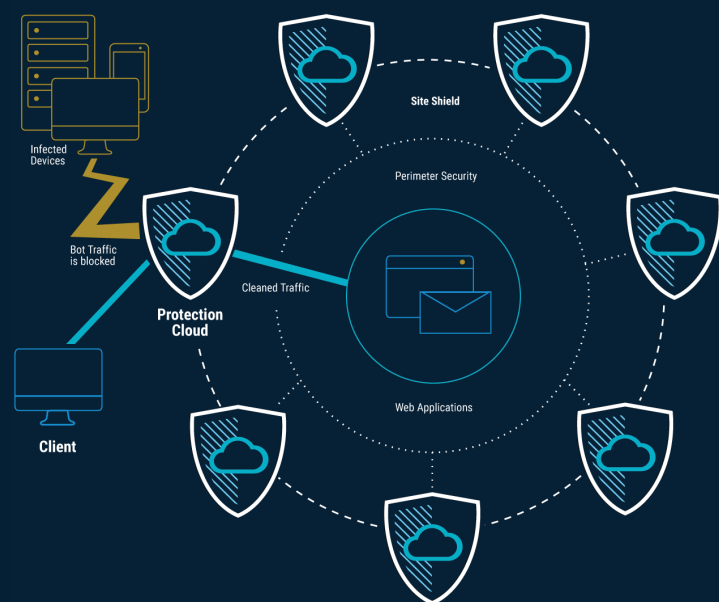


# Web Security Suite

## Web DDoS Protection

Web DDoS Protection is, so to speak, the basic module required for all Web Security Suite solutions. The module is based on the patented, fully cloud-based Protection Engine, which provides DDoS protection for any type of web-based applications, services and APIs. The Protection Engine uses artificial intelligence and machine learning algorithms for fully automated attack detection to protect against all types of known and unknown DDoS attacks. As a result, Link11 offers the fastest mitigation (TTM) available on the market, according to unanimous analyst opinion (Gartner, Frost & Sullivan and others), and enables a very low false positive rate.

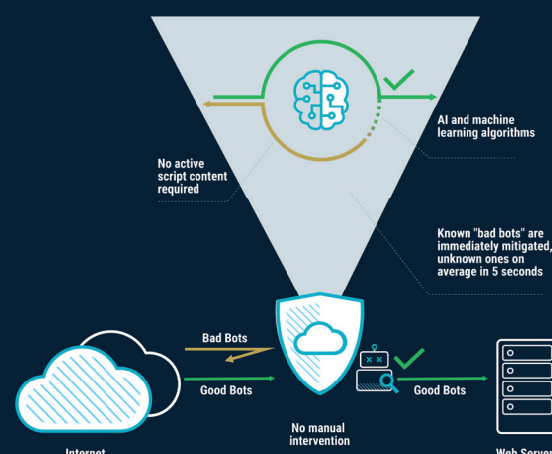
The use of a Zero Touch Web Application Firewall (WAF), load balancing and TLS offloading completes the overall solution to provide 360° security on layer 4-7.



## Bot Management

Bots are automated tools that can be helpful in some cases (search engines, price comparison portals, etc.) but can also harm your business if used for malicious purposes such as web scraping. Today, a large part of a company's website traffic consists of bot traffic. In addition to the business impact, bot traffic can negatively affect website performance, which in turn leads to increasing upscaling costs for the affected internet platforms.

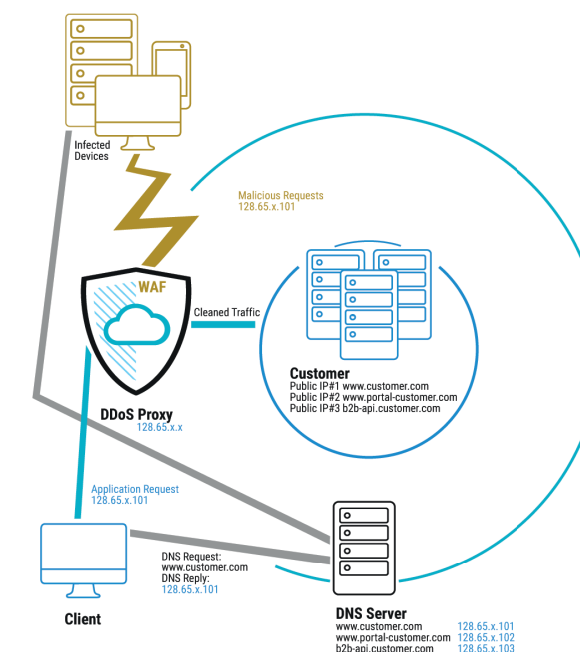
Link11's bot mitigation service uses patented AI and machine learning algorithms to distinguish between good and bad bots in real time. Known bad bots are blocked immediately, while unknown bots are identified and blocked within five seconds on average.



## Web Application Firewall (WAF)

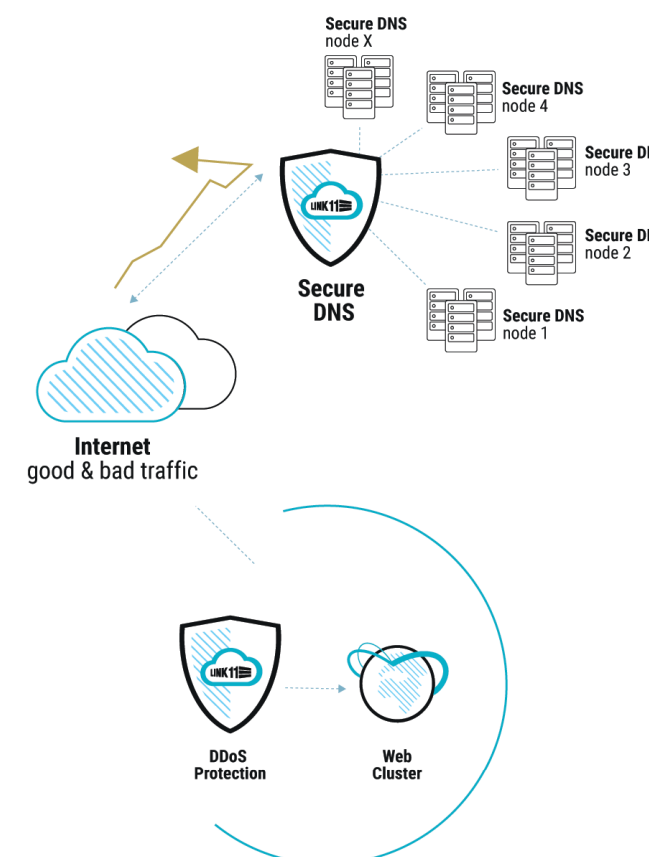
The Link11 Zero Touch Web Application Firewall (WAF) is part of the Cloud Security Platform, which is based on innovative, patented technology. With its fully cloudnative approach and use of artificial intelligence (AI), the solution provides fully automated protection for critical applications, APIs and services.

The solution detects malicious traffic in milliseconds and filters it out without disrupting the real user. It protects web applications and APIs against all common threats, including the Open Web Application Security Project's Top 10 (OWASP Top 10) list, SQL injections, cross site scripting, local and remote file inclusion, remote code execution and more. Business-critical web applications receive comprehensive protection against all common threats and forms of attack with a single solution. So you can focus on your core business.



## Secure DNS

Customers, employees and partners – they all expect instant, secure and reliable access to your website and applications, no matter where they are or what device they are using. The Domain Name System (DNS) is responsible for translating human-readable domain names into numeric IP addresses. This critical process ensures a faster web experience for visitors to your website and users of your applications. Link11's Domain Name Resolution Service Secure DNS resolves your DNS request over the global network consisting of redundant servers. The server infrastructure of Secure DNS is more reliable as it includes many locations around the world. Multiple servers are deployed at each node, connected to the Internet via diverse Tier 1 carriers. DNS requests are always answered by the closest server and users' content is reached faster than ever before.





# Software Development

Vibrant applications and stable systems – thanks to sophisticated deployment strategies and automatic testing. Your business application, regardless of whether it is a standard application or your own development, is in the best hands with us. Development, maintenance and expansion by experienced software engineers – and always according to current coding standards for stable, secure and sustainable software development.

## More Power

You know the situation: You need more power for a project quickly and flexibly and competent specialists are rare. Metaways gives your software project that extra kick and provides you with experienced software developers! Our so-called Velocity Streams offer you maximum flexibility.



## Support

E-commerce is business-critical for many companies, so when software hiccups and outages occur, getting competent help promptly is essential. That's where Metaways Application Support comes in and provides you with a rapid response team with guaranteed response times.



## Individual Software

We develop business-critical applications for you that are designed to optimally support your processes while remaining flexible. To this end, we advise you on which framework and which architecture are best suited to your requirements. During implementation, our experienced developers pay special attention to secure development: clean, traceable code, test-driven development and proven deployment mechanisms for complex environments.



# The smart plan for every support need

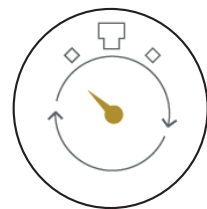
Our official hosting partnerships with Shopware and Spryker stand for proven competence and experience in hosting these two established store systems. But we can do much more. The focus of our operational competence is on modern and scalable web stacks, as also found in alternative e-commerce applications and individual developments – from classic to headless.





# Architecture Consulting

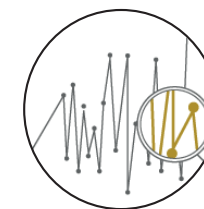
You are not sure what type of hosting you need? Hosting setup, platform architecture, cluster concept, deployment chain and continuous delivery processes? Do not worry, we will not leave you alone with all these questions. With over 15 years of experience, we advise you comprehensively and individually on sizing, components and services.



## Continuous Integration / Continuous Deployment (CI/CD)

Agile e-commerce projects have special requirements for Continuous Delivery due to their deployment frequency. Downtimes during deployment should be avoided as much as possible. Rollback should be possible at any time during the deployment process. Errors and undesired application behaviour should be identified through suitable test strategies even before the actual deployment process.

Let us show you what a Continuous Delivery Chain suitable for your project can look like, so that you can press the release button with complete peace of mind. Automated testing, version control, ticketing or build servers are just some of the tools that you can use to deploy your updates even on a Friday afternoon.



## Load & Function Tests

The performance of your system leaves a lot to be desired? Our load and function tests help you to identify your platform's weak points or bottlenecks. Even when it comes to rebuilding a system, we can adjust the sizing in advance so that malfunctions or failures do not occur. Metaways develops detailed test plans with you, implements them, adjusts them if necessary and evaluates the results. You will then receive a comprehensive analysis with suggestions for improvement. And all this as an independent authority, if you otherwise rely on other service providers.





**Address:** Metaways Infosystems GmbH  
Pickhuben 2  
20457 Hamburg

**Phone:** +49 (0) 40/ 317031-65

**Fax:** +49 (0) 40/ 317031-10

**E-mail:** [sales@metaways.de](mailto:sales@metaways.de)

**Website:** [www.metaways.de](http://www.metaways.de)

**Year established:** 2001

**Management:** Hermann and Lüder-H. Thaele

**Head Office:** Hamburg / Speicherstadt

**Company type:** GmbH

**Industry Specialist:** Hosting & Application